



SLHC-PP

MILESTONE REPORT

EU MILESTONE: 2.1

Document identifier:	SLHC-PP-M2.1-1049288-v1.0
Contractual Date of Delivery to the EC	End of Month 18 (September 2009)
Document date:	14/12/2009
Milestone Title:	Financial management system (initial version)
Work package:	WP2: Coordination for the SLHC accelerator implementation
Lead Beneficiary:	CERN
Authors:	G. de Rijk
Document status:	Released
Document link:	https://edms.cern.ch/document/1049288



MILESTONE REPORT

Doc. Identifier:
SLHC-PP-M2.1-1049288-v1.0

Date: 14/12/2009

History of Changes

Version	Date	Comment	Authors
1.0	14-12-09	Released	G. de Rijk

Copyright notice:

Copyright © Members of the SLHC-PP Collaboration, 2008.

For more information on SLHC-PP, its partners and contributors please see www.cern.ch/SLHC-PP/

The Preparatory Phase of the Large Hadron Collider upgrade (SLHC-PP) is a project co-funded by the European Commission in its 7th Framework Programme under the Grant Agreement n° 212114. SLHC-PP began in April 2008 and will run for 3 years.

The information contained in this document reflects only the author's views and the Community is not liable for any use that may be made of the information contained therein.

SLHC-PP Milestone: 2.1, Financial management system (initial version)

Due: M18 (before September 30, 2009)

The financial management system consists of a number of computerized tools:.

1. Planning of personnel, material and contract expenditure, cost estimates.
 - a. Activity planning tool. APT, to plan personnel resources into activities and projects
 - b. Costing Tool, to make cost estimates for projects.
2. Procurement and orders,
 - a. Electronic Document Handling. EDH, to place orders internally and externally.
 - b. Contracts Follow Up, CFU, to follow supply contracts through their lifecycle.
 - c. CERN Expenditure Tracking, CET, to keep track of material budget expenditure
3. Personnel expenditure tracking
 - a. Timesheets. This is mainly used for third party co-funded projects
4. Project progress tracking
 - a. Project Progress Tracking, PPT, collaborative Progress Tracking and Follow-up within projects or other business contexts (Earned Value Management, EVM)

The origin of the tools are from CERN's general management automation efforts in the last 20 Years (EDH and CET), the LHC project (EVM and PPT)) and post-LHC (sLHC, CLIC, FP7) projects and expenditure planning and management tool development (APT, PPT-EVM, APT, Costing Tool).


Collaborations and projects can use specific non-CERN budgets in this system (e.g. team accounts) and handle contributions to projects by non-CERN providers.

The full linkage between the tools is a longer time effort. It needs careful optimization to suit the interests of CERN and of the various collaborations and global projects. In the framework of SLHC-PP and CLIC the CERN IT services are undertaking software efforts to achieve this linkage.

Present status

- New version of PPT-EVM. The PPT-EVM from the LHC project was adapted for the sLHC projects LINAC4 and NIT (new Inner Triplet).
- The Costing Tool is a new development which will serve to do the cost estimates for future accelerator projects like PS2, SPL and CLIC

In Fig. 1-4 screen-dumps of 4 applications can be found.



CET Transactions By Cost Centre

14 Dec 2009 / DE RIJK, Gijsbertus Dr.

Last Extraction: 14 Dec 2009
 Book-closed for: November (Stores: November)
 Last Book-closing: 08 Dec 2009

Search Criteria: Services

Organic Information

<p>Organic Unit: <input style="width: 90%;" type="text"/></p> <p>Budget Code: <input style="width: 90%;" type="text"/></p> <p>Project: <input style="width: 90%;" type="text"/></p> <p>PPA Unit: <input style="width: 90%;" type="text"/></p> <p>Program: <input style="width: 90%;" type="text"/></p> <p>Budget Control Unit: <input style="width: 90%;" type="text"/></p> <p>Time Period: <input type="text" value="This Year + Carry Over"/> <input type="button" value="v"/> <input type="button" value="E"/> <input style="font-size: 8px; vertical-align: middle;" type="button" value="?"/></p> <p>Pipeline Transactions Only: <input type="checkbox"/></p>	<p>Nature Type: <input type="text" value="Materiel"/> <input type="button" value="v"/> <input style="font-size: 8px; vertical-align: middle;" type="button" value="?"/></p> <p>Nature Code: <input style="width: 90%;" type="text"/></p> <p>Destination (Activity): <input style="width: 90%;" type="text"/></p> <p>Recurrency: <input type="text" value="All"/> <input type="button" value="v"/> <input style="font-size: 8px; vertical-align: middle;" type="button" value="?"/></p> <p>Sub-Program: <input style="width: 90%;" type="text"/></p> <p>Funding Source: <input type="text" value="All"/> <input type="button" value="v"/> <input style="font-size: 8px; vertical-align: middle;" type="button" value="?"/></p> <p>Pipeline: <input type="text" value="All"/> <input type="button" value="v"/> <input style="font-size: 8px; vertical-align: middle;" type="button" value="?"/></p>
--	---

Order Criteria

Transaction Criteria

Monetary Filters

Custom Query Input

Output Format:

Hide form:

Show Borders:


Runtime:

Figure 1 Screen-dump of the CET application



CERN — European Organization for Nuclear Research

CONTRACT FOLLOW UP



Logout

Department Requests

- [Create DR in EDH](#)
- [Edit DR in Qualiac](#)
- [View DR in CET](#)
- [View DR Summary \(pdf\)](#)

Market Surveys

- [Edit MS in Qualiac](#)
- [View MS in CET](#)
- [View MS Summary \(pdf\)](#)

Invitation to Tenders and Price Enquiries

- [Edit IT in Qualiac](#)
- [Edit PE in Qualiac](#)
- [View IT/PE in CET](#)
- [View IT/PE Summary \(pdf\)](#)

Contracts

- [Edit Contract in Qualiac](#)
- [Edit Protocol in Qualiac](#)
- [View contract in CET](#)
- [View Contract Summary \(pdf\)](#)

Committees, Meetings and Documents

- [Other Committees and Meetings](#)
- [FC Meetings](#)
- [FC Documents](#)
- [Proposals to Award / DR Announcements](#)

Utilities

- [Report Navigator](#)
- [Exit CFU](#)

Referential Data

- [Articles](#)
- [Budget Codes \(CGRs\)](#)
- [Countries](#)
- [All Persons](#)

Useful Links

- [Qualiac/CFU Documentation](#)
- [Abstract of CERN Purchase Procedures](#)
- [AISmedia guide](#)

Related Documents in AISMedia

Document Reference (ex. F123/IT or F123%):

For problems or comments send email to ais.support@cern.ch

Copyright CERN

Figure 2 Screen-dump of the CFU application

Grant Agreement 212114

© Members of SLHC-PP collaboration

PUBLIC

4 / 5

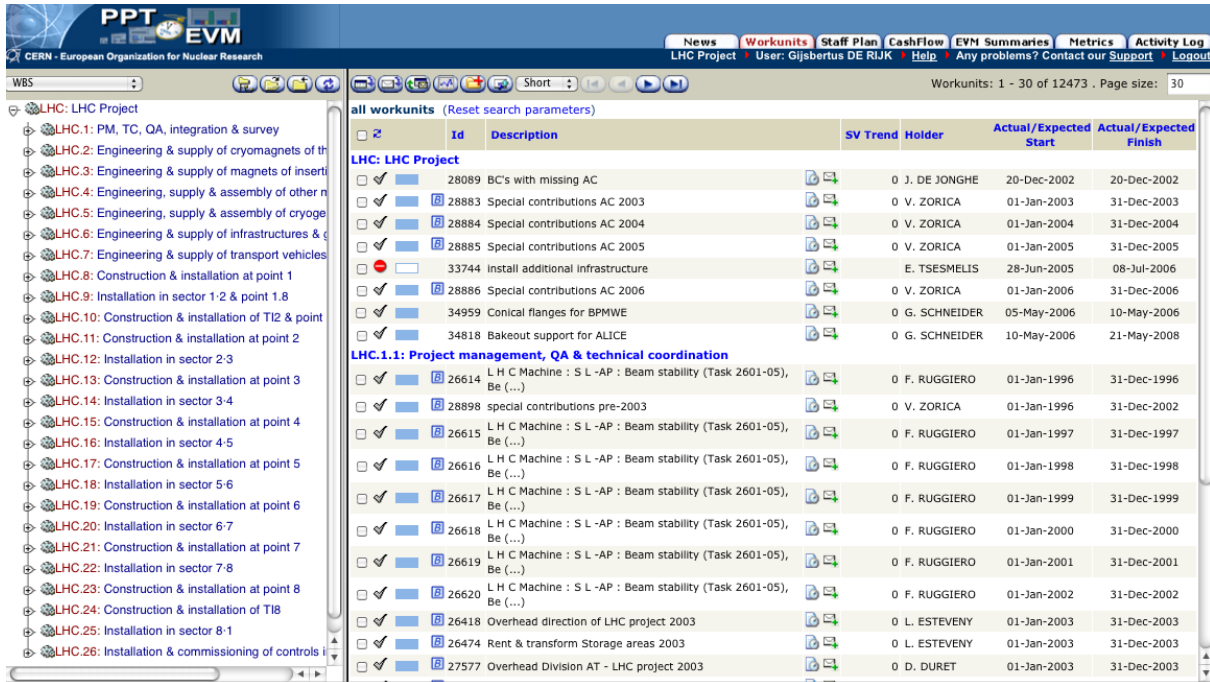


Figure 3 Screen-dump of the PPT-EVM application

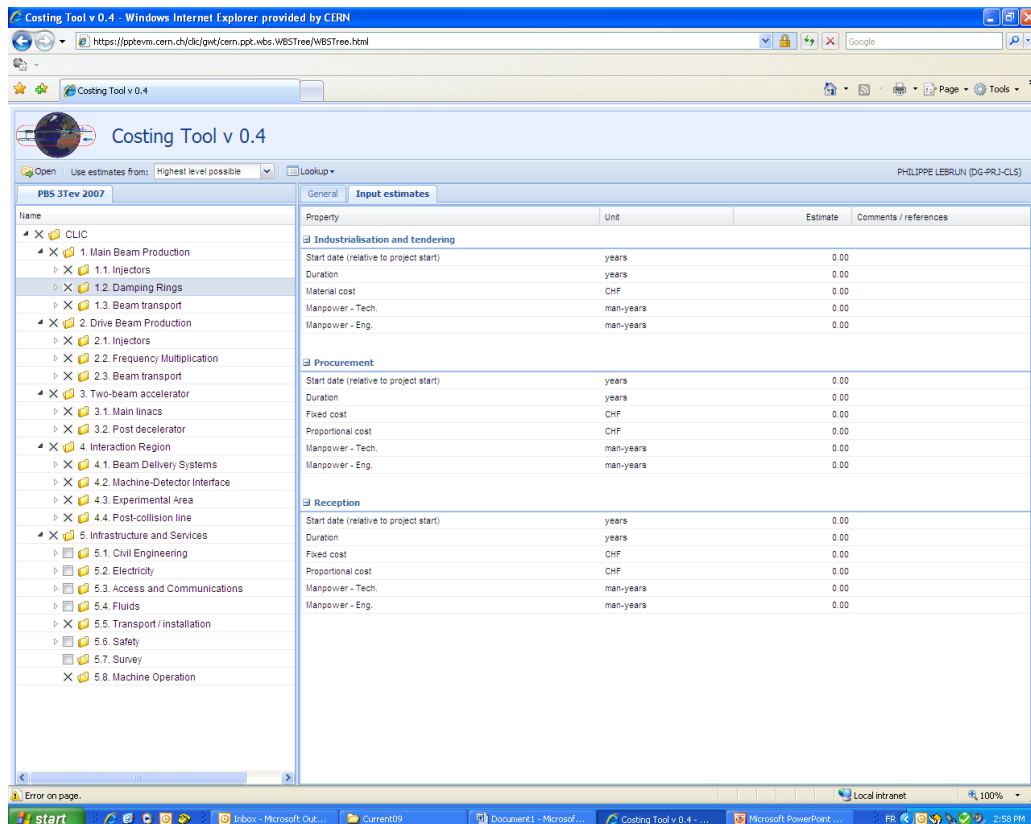


Figure 4 Screen-dump of the Costing Tool application